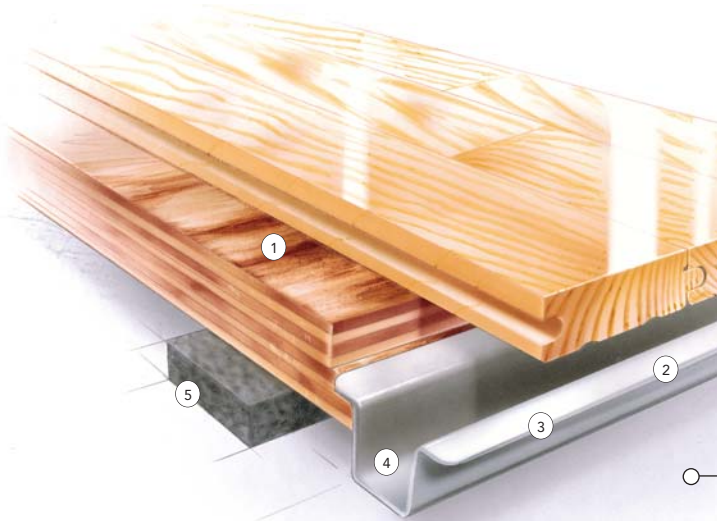


SYSTEM FEATURES AND BENEFITS

A sports floor system providing the stability of an anchored floor with the uniform resiliency of a floating system, consisting in general of a vapor barrier, resilient pads, continuous steel channel, steel anchors, wood subflooring, maple flooring, sanding, sealers, finishes, game lines and wall base.

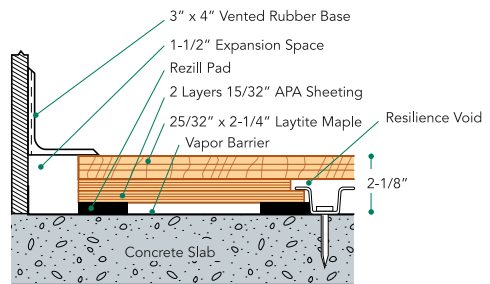


- ① Pre-assembled subfloor panels
- ② Continuous channel assures uniform substrate contact
- ③ Heavy-duty, buckle resistant steel channel provides greater resistance to pin pull through and upward pressure
- ④ Open channel for visual anchor inspection and additional anchor placement
- ⑤ Rezill Pad for excellent resilient life and loading

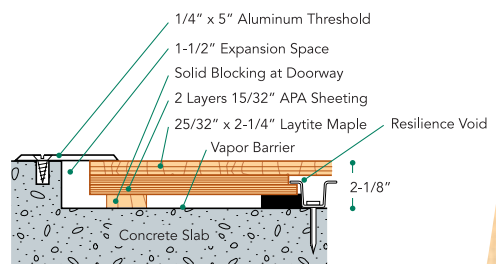
SPECIFICATIONS

MANUFACTURING	ISO9001:2000 CERTIFIED
U.S. PATENT #	5,016,413
SYSTEM TYPE	Fixed Resilient
ANCHORAGE	Continuous Channel (Design Group 1)
SUBFLOOR CONSTRUCTION	Plywood panel
RESILIENCE	Rezill pads
NIKE GRIND	ONLY Connor offers flooring systems with Nike Grind Components
SLAB DEPRESSION	25/32" flooring – 2 1/8" 33/32" flooring – 2 3/8"
DIN STATUS	D-I-N MEETS OR EXCEEDS ALL REQUIREMENTS
TESTING LABORATORY	United States Sports Surfacing Laboratory
CERTIFIED TESTING	Laboratory test equipment calibrated and certified through the ISSS
GREEN STATUS	Managed forests, certification available

WALL BASE DETAIL



THRESHOLD DETAIL (optional accessory)



EQUIPMENT DETAIL (optional accessory)

