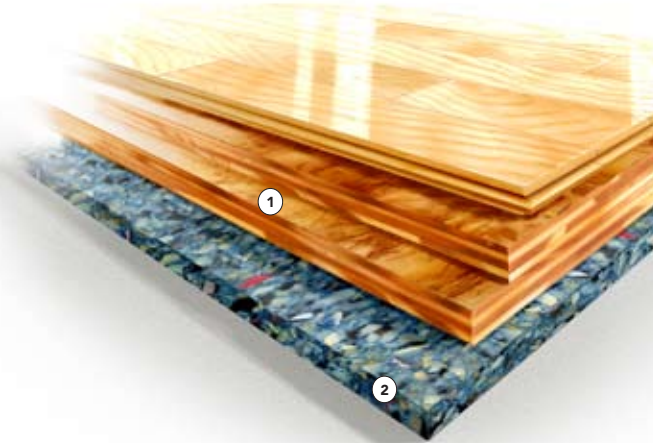


F L O A T I N G S Y S T E M

SYSTEM FEATURES AND BENEFITS

A floating sports floor system with high shock absorption and ball rebound, consisting in general of a vapor barrier, resilient Rezill Cushion, wood underlayment, maple flooring, sanding, sealers, finishes, game lines, and wall base.

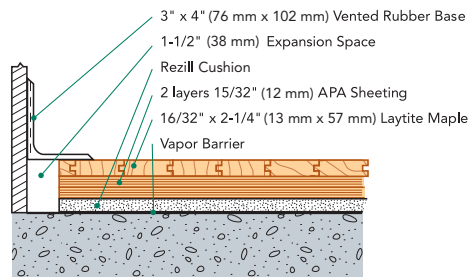


- ① Two layers of APA rated plywood
- ② Rezill Cushion

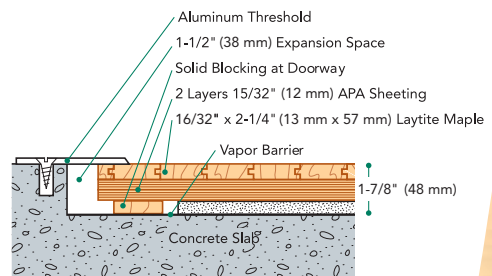
SPECIFICATIONS

MANUFACTURING	ISO 9001:2000 CERTIFIED
SYSTEM TYPE	Floating System
ANCHORAGE	No concrete attachment
SUBFLOOR CONSTRUCTION	Plywood Panel
RESILIENCE	Rezill Cushion
RECYCLED CONTRIBUTION	Rezill Panel RD Subfloor System includes components with recycled content
SLAB DEPRESSION	16/32" (13 mm) flooring – 1 7/8" (48 mm)
TESTING LABORATORY	United States Sports Surfacing Laboratory
CERTIFIED TESTING	Laboratory test equipment calibrated and certified through the ISSS
GREEN STATUS	Managed forests, certification available
DIN STATUS	D·I·N meets or exceeds all the requirements of DIN 18032, part 2

WALL BASE DETAIL (RezillCushion RD)



THRESHOLD DETAIL (optional accessory)



EQUIPMENT DETAIL (optional accessory)

